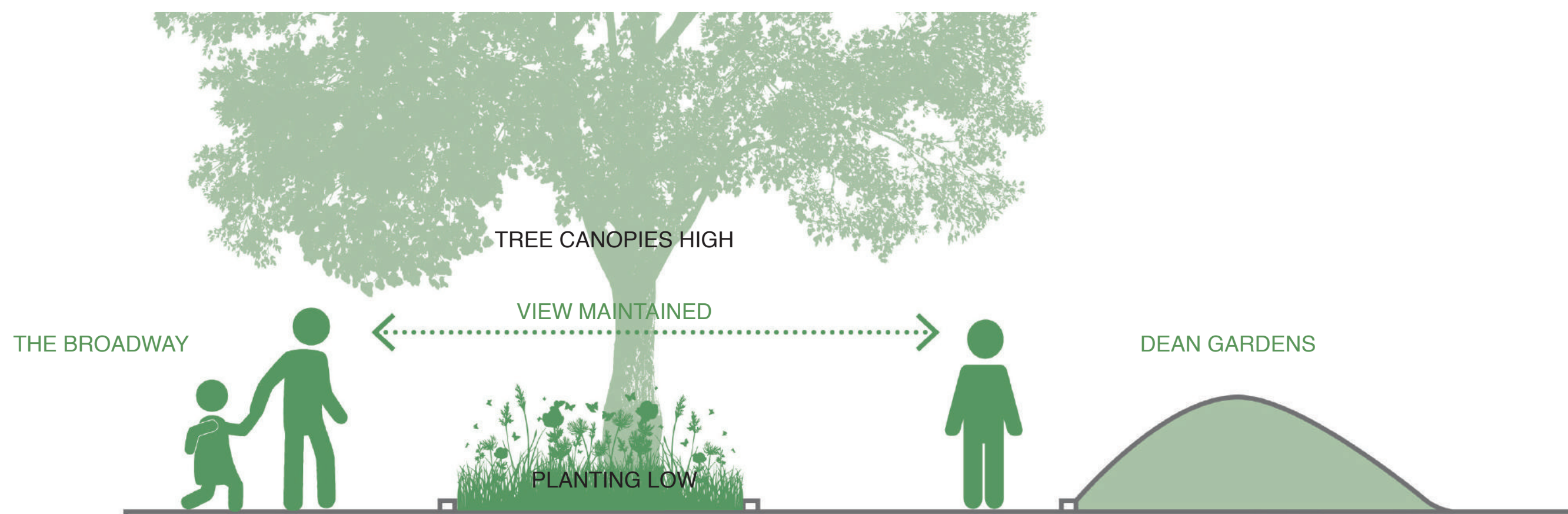
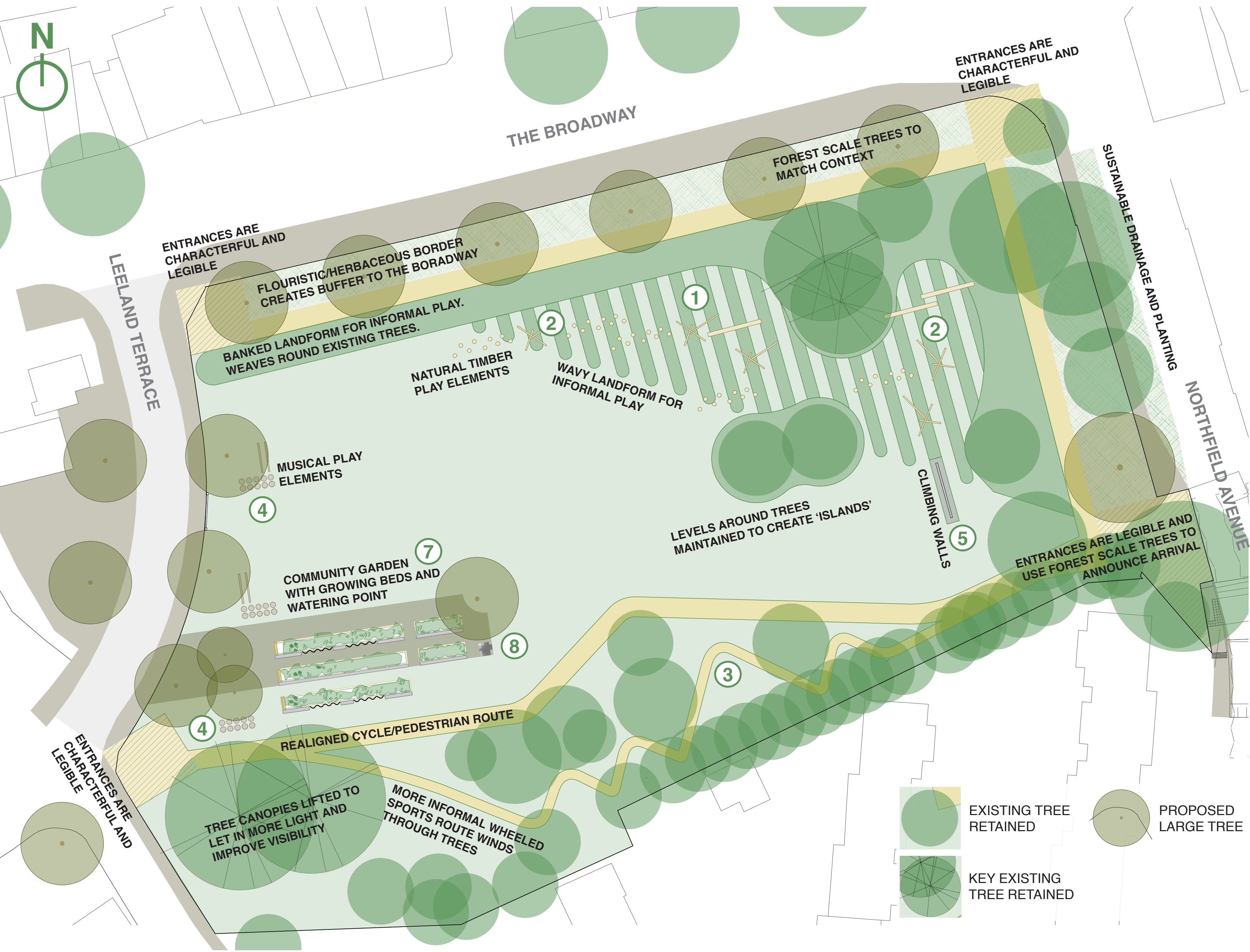


HELP SHAPE THE FUTURE OF DEAN GARDENS

4

OPTION 2 - USING LANDFORM FOR PLAY - WAVES



OPTION 2 - CONCEPT IMAGE



OPTION 2 - ILLUSTRATIVE AXONOMETRIC



THIS OPTION INCLUDES THE FOLLOWING INGREDIENTS: PLAY

- The main play element in this option uses **① Wavy Landform** that is un-prescriptive and cross-generational. The waves have **② natural timber play** elements set within them which vary in ability use and ambition. This creates a continuous play surface that children can progress through as they grow older and more ambitious, seeking out more challenging play.
- A **③ winding wheeled sports route** for a wide range of abilities is also included in this option. This will allow children, of varying age and ability, to learn how to ride their wheels and also creates a playful route to school.
- ④ Musical play elements** are also included in Option 2. Successful play spaces stimulate the five senses and sound play will encourage imagination and creativity.
- Youth play provision in Option 2 is provided through **⑤ small climbing walls**. These walls provide people with the opportunity to climb and will appeal to a variety of age ranges.



PLAY THROUGH SOUND AND MUSIC ENGAGES OTHER SENSES



SMALL CLIMBING WALLS PROVIDE INTERGENERATIONAL PLAY



A PLAYFUL ROUTE TO LEARN TO RIDE YOUR WHEELS



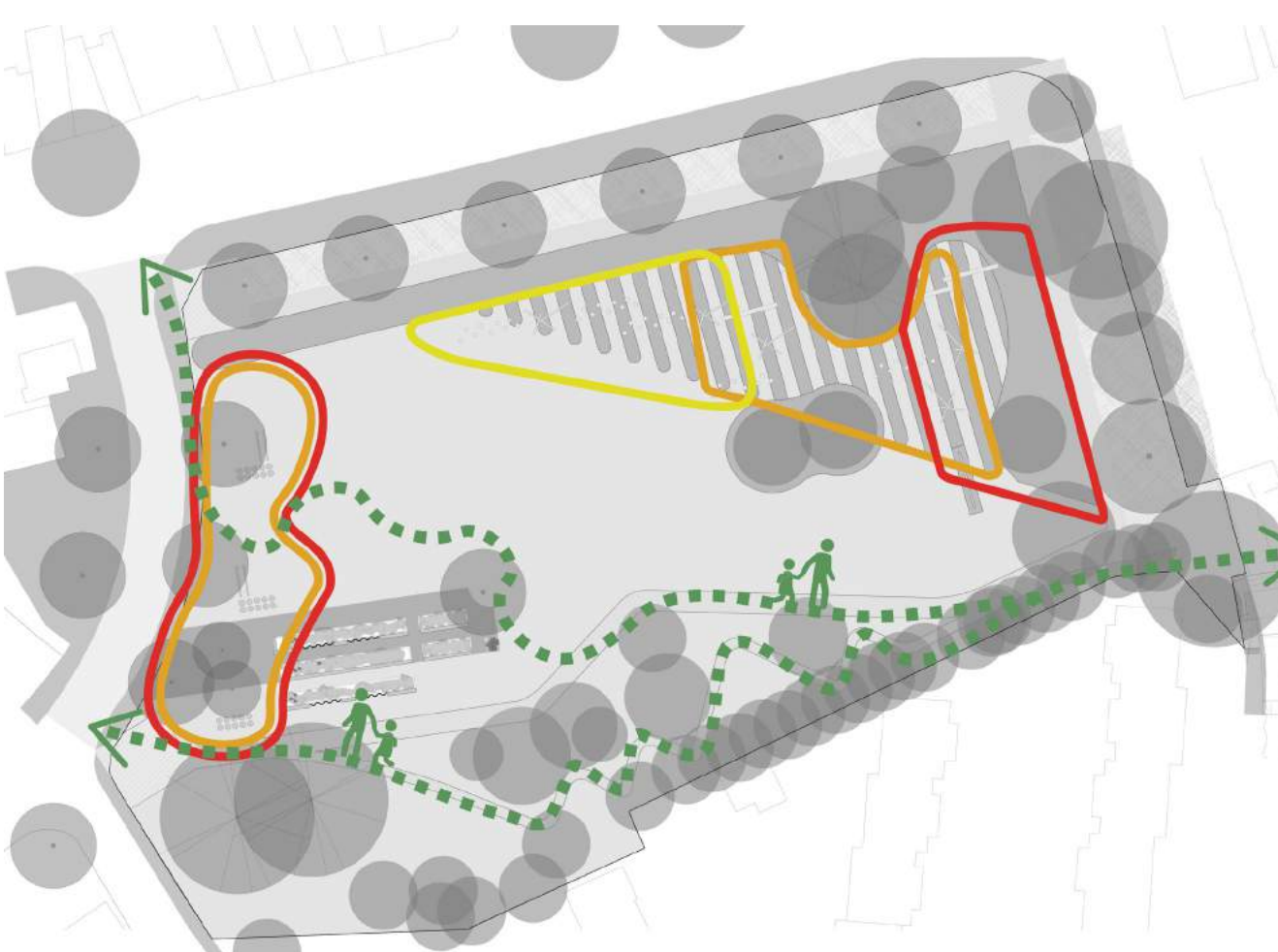
BESPOKE TIMBER PLAY POSTS WITH ROPE CLIMBING NET



TIMBER CLIMBING FRAME WITH STEEL SLIDE



ROPE SWING FROM CANTILEVERED TIMBER ARM



PROPOSED PLAY MIX FOR OPTION 2 WITHIN DEAN GARDENS, SHOWING AN OVERLAP OF PLAY AGE RANGES

LANDFORM

- The landform in this option **⑥ follows the tree line**, retaining existing trees and creating characterful 'islands'. This landform is high enough to prevent people from easily crossing over but is low enough to ensure visibility across the park is maintained.
- Running perpendicular to this landform are smaller **① waves** which create a fun, un-prescriptive terrain for children to play on. A surface like this will help promote physical activity and sustainable transportation within the park. Dean Gardens is very popular with children and parents on the walk to and from School. Ensuring the design of the park creates a playful route to school, where children can play, learn new skills and build their confidence, will encourage more people to be active. We think play can be an important route into more formal sport and Dean Gardens could provide this opportunity.



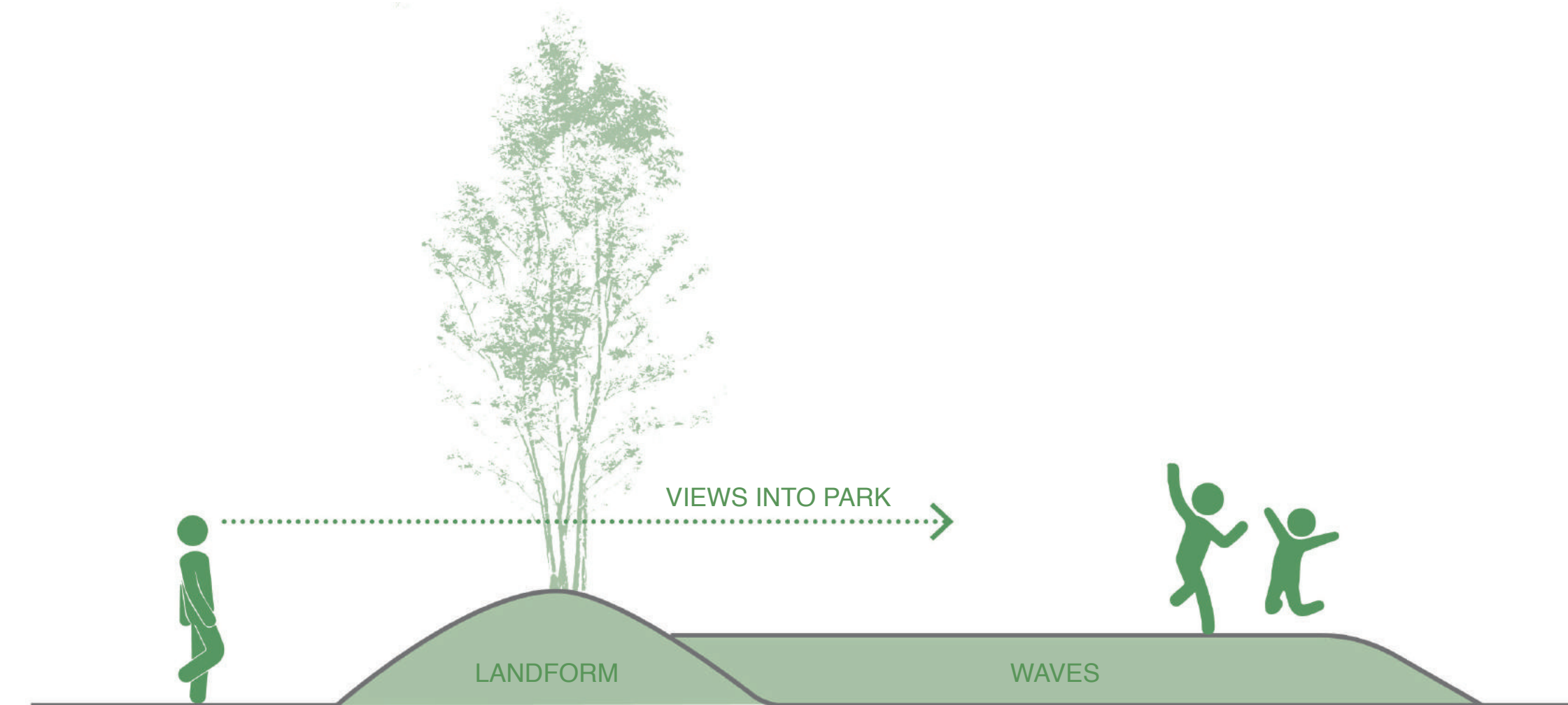
ROLLING EARTHFORMS CREATE WAVES TO RUN OVER



A SURFACE THAT CAN BE PLAYED ON IN MANY DIFFERENT WAYS



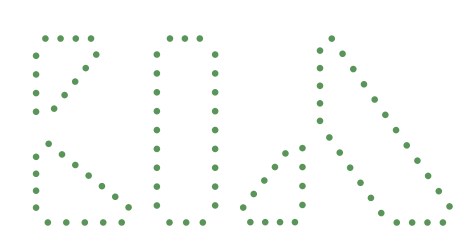
AN INTRINSICALLY PLAYABLE SURFACE THAT DEFINES THE CHARACTER OF THE SPACE



CONCEPT SECTION THROUGH LANDFORM AND WAVY SURFACE. LANDFORM HELPS KEEP CIRCULATION TO THE EXTENTS OF THE PARK WHILST MAINTAINING VISUAL PERMEABILITY

COMMUNITY

- This option contains a Community Garden with **⑦ growing beds** and a **⑧ watering point**. The growing beds are linear and vary in height to allow people of mixed ability to access and use them. The watering point also has added play value and can be used as a drinking fountain. The Community Garden has a more central location along Leeland Terrace.



New Practice

